



Joytech Products Co., Ltd.

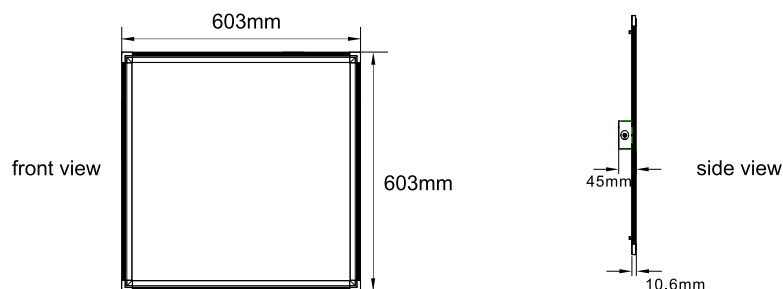
UL LED Panel Light (DLC4.0 Standard)

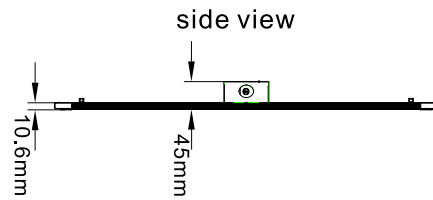
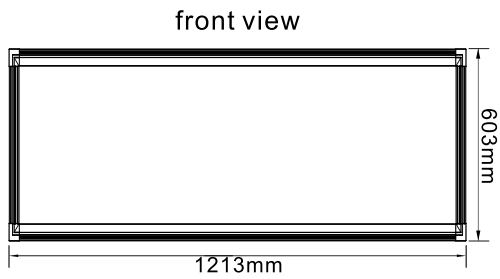
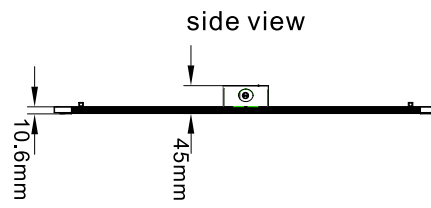
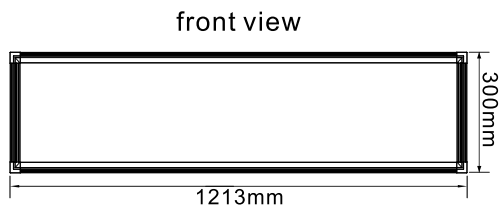


Product Description

- **UL Listed Class P Type# Lifud's LED Driver with UL/cUL# E338140, Longood's LED Driver with UL/cUL# E338513**
- **PF \geq 0.90, Power Efficiency > 0.88, CRI > 80;**
- **Perfect Light Uniformity, LM-80-rated SMD2835 LED Chips, Up to 110LM/W ;**
- **Saving more than 80% energy compared with traditional grid fixtures.**
- **Light Guide Plate in 3mm thickness, imported from Taiwan;**
- **Approved from UL/cUL#E471997, DLC,ROHS, etc.**
- **5 years warranty.**

Dimension



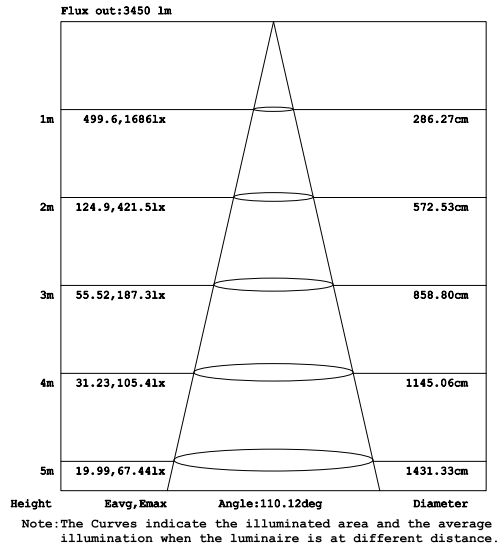
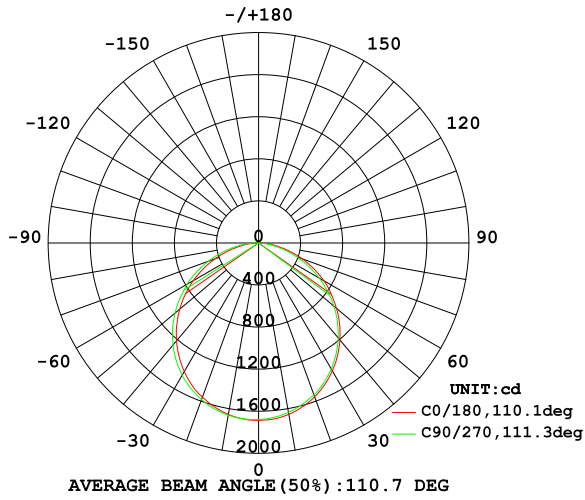


Product Specification

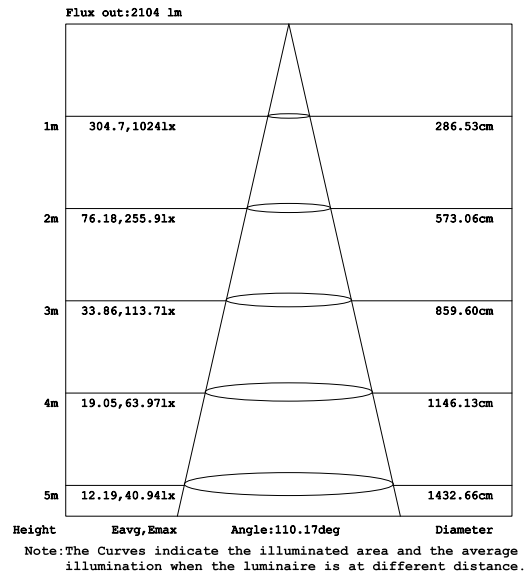
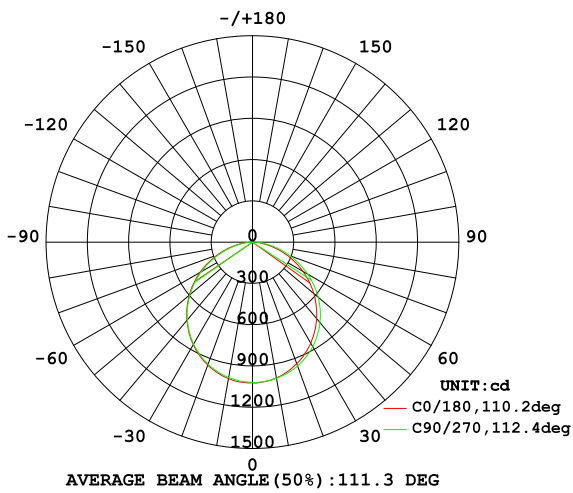
Size(Ft)	2X2			1X4	2X4			
Power Consumption(W)	25	40	50	40	40	50	60	72
Lumen Output(LM)	2625±5%	4200±5%	5250±5%	4200±5%	4200±5%	5250±5%	6300±5%	7560±5%
Light Efficacy (lm/W)	105±5%							
CCT(K)	3045±175K 3465±245K 3985±275K 4503±243K 5028±283K							
Color Rendering Index(CRI)	>80							
AC Input Rating(Vac)	AC 100-277V 50/60Hz							
Dimming(Non-dimming,0-10V)	Optional							
PF	≥0.90							

Photometric Data&Diagram

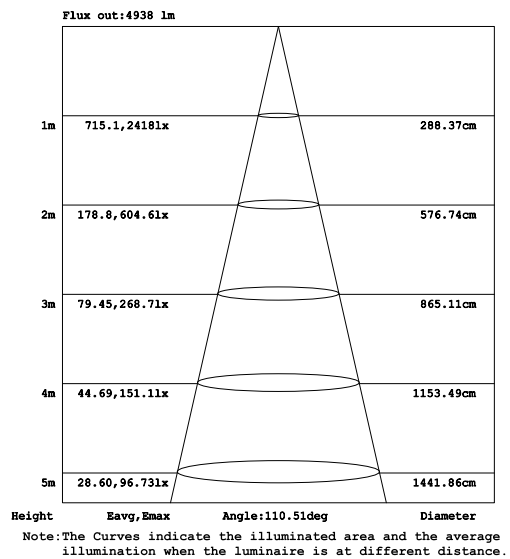
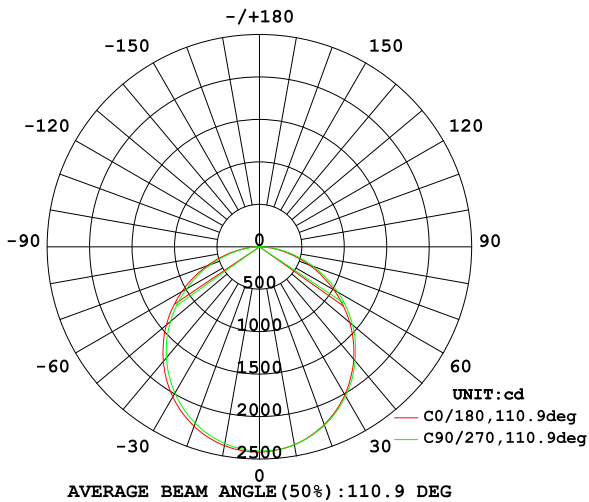
1X4 LUMINOUS INTENSITY DISTRIBUTION DIAGRAM



2X2 LUMINOUS INTENSITY DISTRIBUTION DIAGRAM

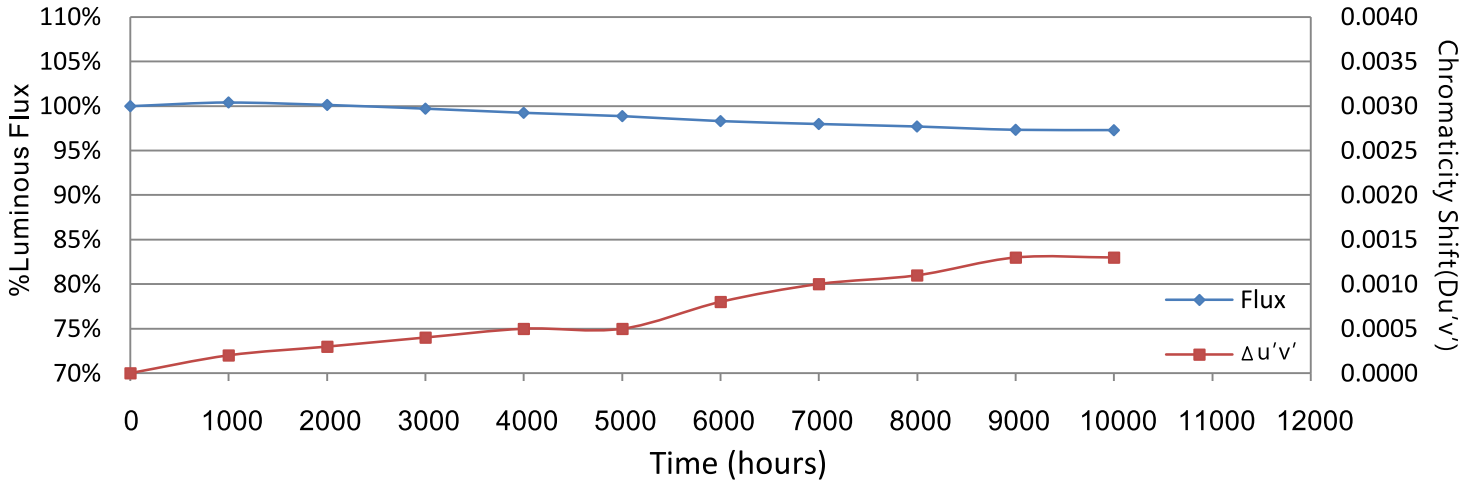


2X4 LUMINOUS INTENSITY DISTRIBUTION DIAGRAM



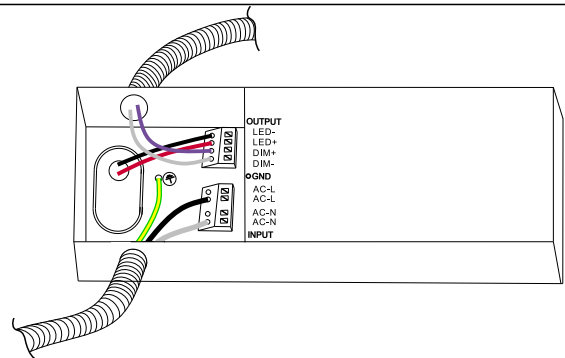
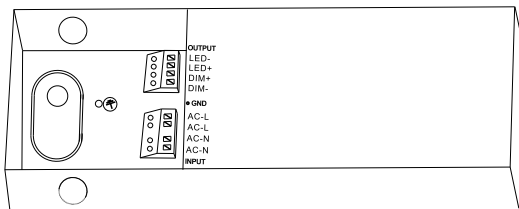
Luminous Decay Graph

Data Set 1, 55°C, 60mA (Chromaticity Shift)

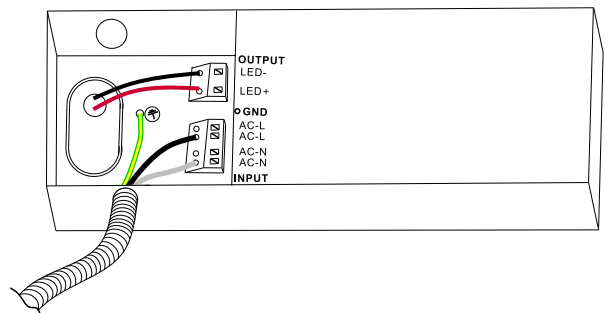
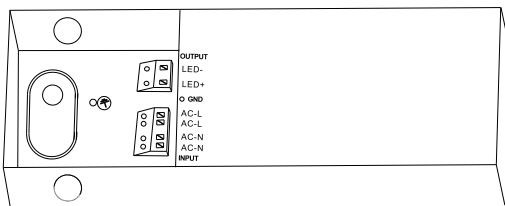


Connection Mode

Dimming Driver

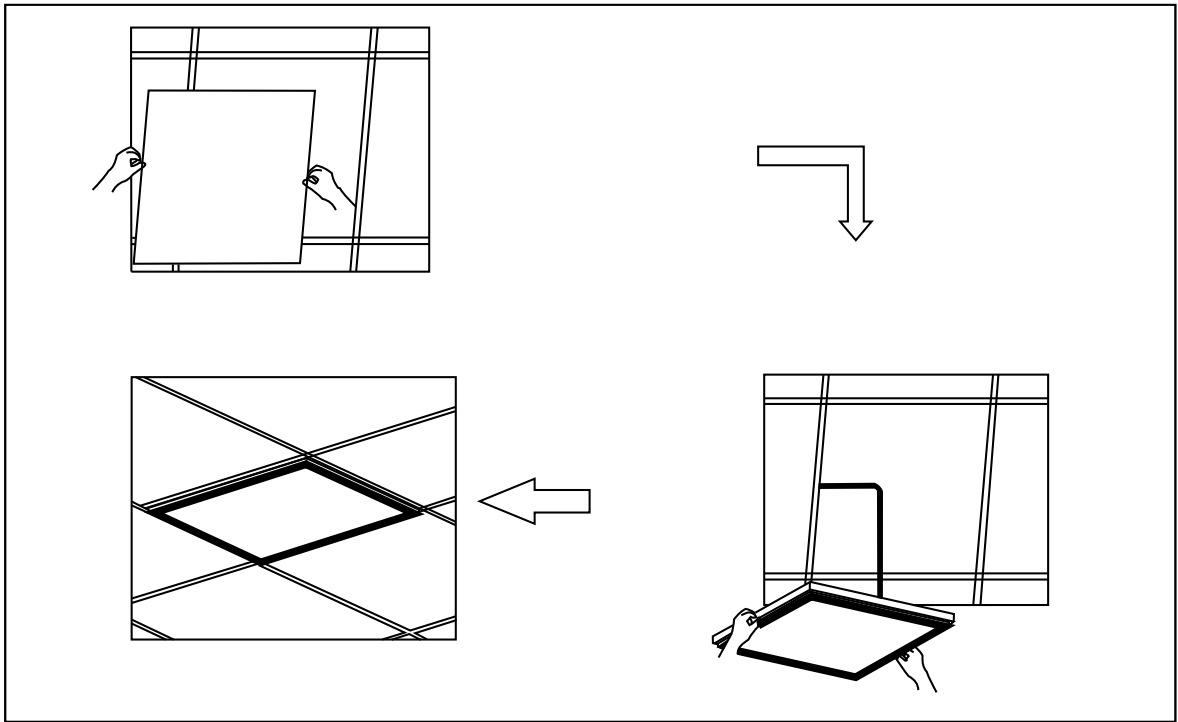


Non-dimmable Driver



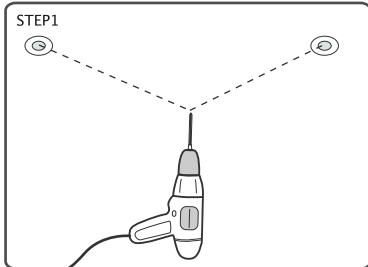
Installation Guide

Build-in

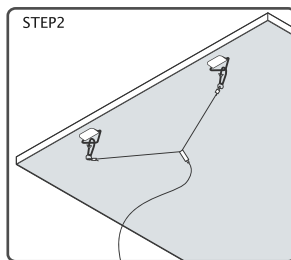


Suspended

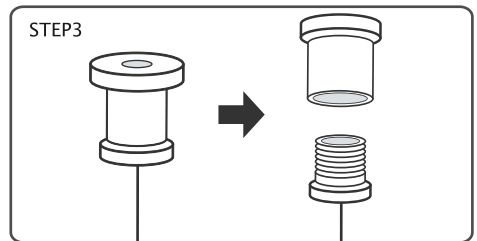
According to the width of the panel light, drill 2 mounting holes on the mounting position



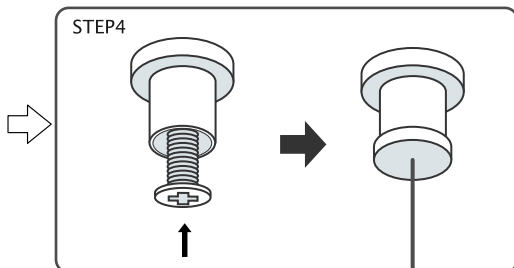
Button the panel light with the dog buckle of the equipped rope.



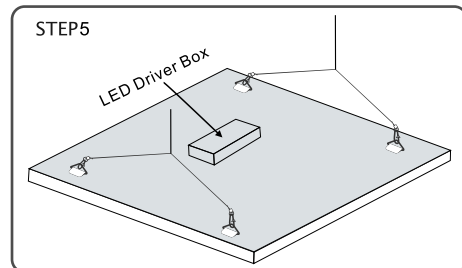
Twist off the rope grab device, and divide it into two parts: the upper cover and lower cover.



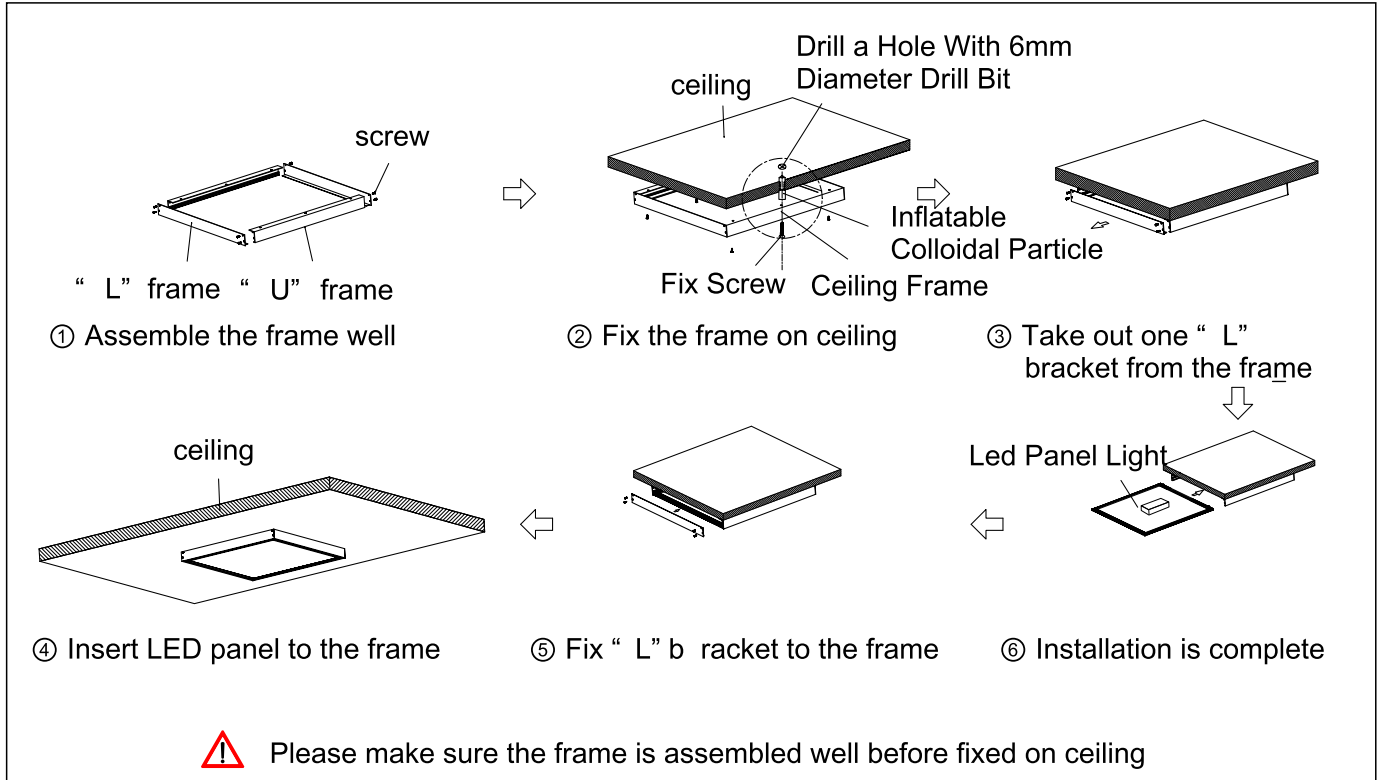
Fix the upper cover into prepared mounting holes with self-tapping screws (not included), and then twist on the lower cover.



Connect LED panel light by the hook of suspension wire

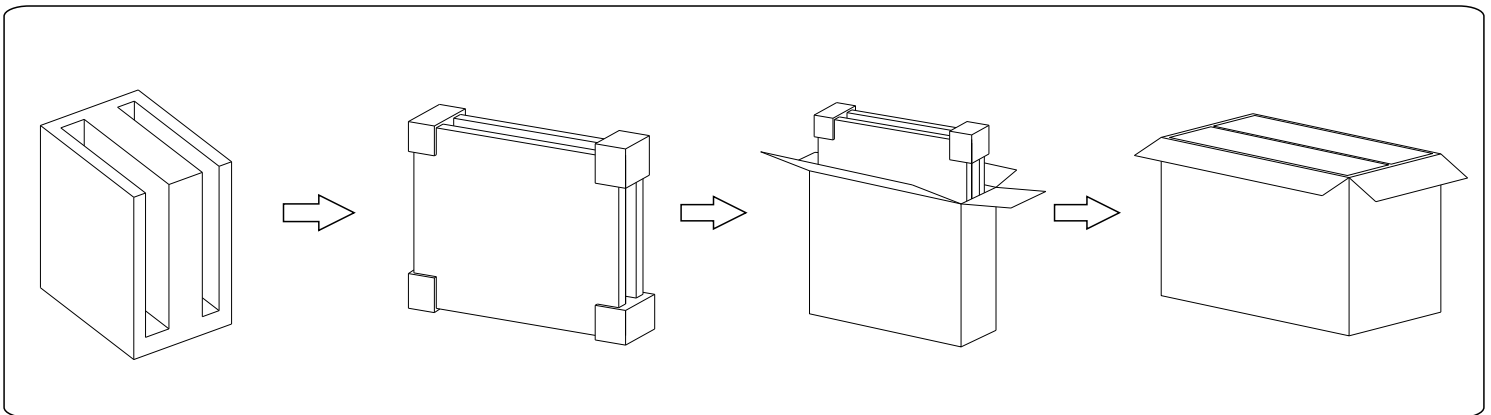


Surface Mount



Package

Item	N.W.	CARTON SIZE(cm)	Qty.	G.W.	20GP container can load (Qty)	40HQ container can load (Qty)
2X2 FT	3.8kg/pc	68x70x25	4pcs/CTN	19.0kg/CTN	996	2244
1X4 FT	3.7kg/pc	129x40x25	4pcs/CTN	18.5kg/CTN	852	2156
2X4 FT	7.3kg/pc	129x70x25	4pcs/CTN	35.2kg/CTN	512	1204



Warning

- Please use the product within the specified range of voltage.
- Please follow the correct installation steps to install the product, and do not touch when it is working.
- Please turn power off when installing and removing the products to avoid risk of electric shock.
- Please install the panel in the correct sized fixture.
- Do not look directly at LED light source for a long time.

Warranty

- 5 years warranty from the shipping date;
- **We** will replace all the failed products due to design/production quality during warranty period;
- **We** will bear all cost of maintains if the customer can help us to repair locally;
- **We** don't have the responsibility to compensate for any incorrect installation or artificial damage;
- **We** don't have the responsibility to compensate for damage occurred during the transit.

Application Reference

Application for most indoor area for Commercial Lighting, residential lighting and Industrial lighting, etc.

Warning and caution:

1. Don't use in completely enclosed fixture and damp area.
2. Used as safety or emergency lamps are not recommended.



family



office

JOYTECH PRODUCTS CO.,LTD

1F, No.15, Lane 27, Sec.3 Chung-king South Rd., Taipei 100, Taiwan, R.O.C

Tel : 886-2-23582899 Fax : 886-2-23415778

E-Mail : sales@joytech-jpc.com.tw Website : www.joytech-jpc.com.tw