



# Joytech Products Co., Ltd.

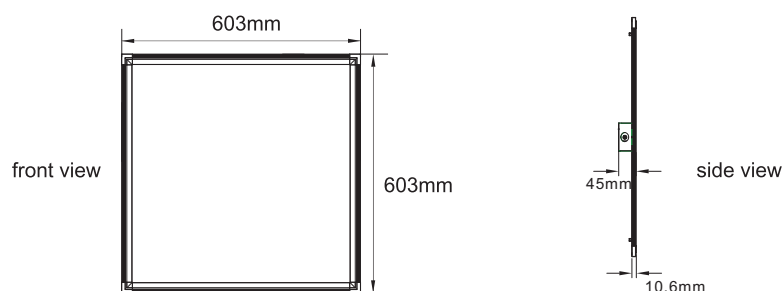
## UL LED Panel Light (DLC4.0 Premium)

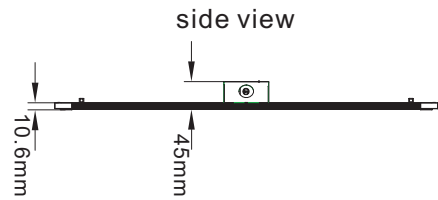
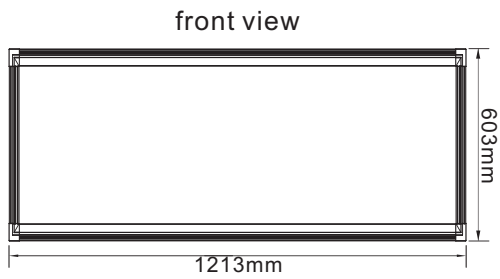
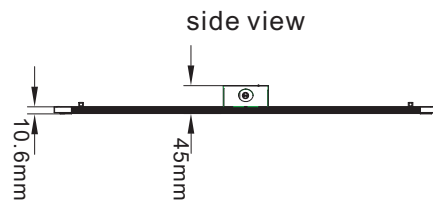
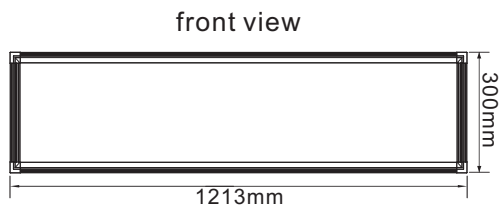


### Product Description

- UL Listed Class P Type# Lifud's LED Driver with UL/cUL# E338140.
- $PF \geq 0.90$ , Power Efficiency  $> 0.88$ , CRI  $> 80$ ;
- Perfect Light Uniformity, LM-80-rated SMD2835 LED Chips, Up to 130LM/W ;
- Saving more than 80% energy compared with traditional grid fixtures.
- Light Guide Panel in 3mm thickness, imported from Taiwan;
- Approved from UL/cUL#E471997,DLC, ROHS, etc.
- 5 years warranty.

### Dimension



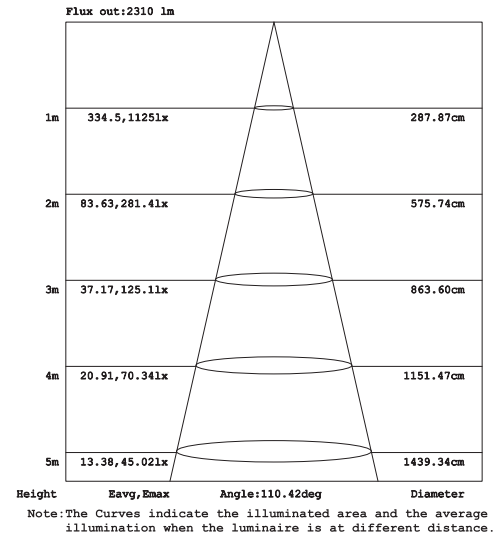
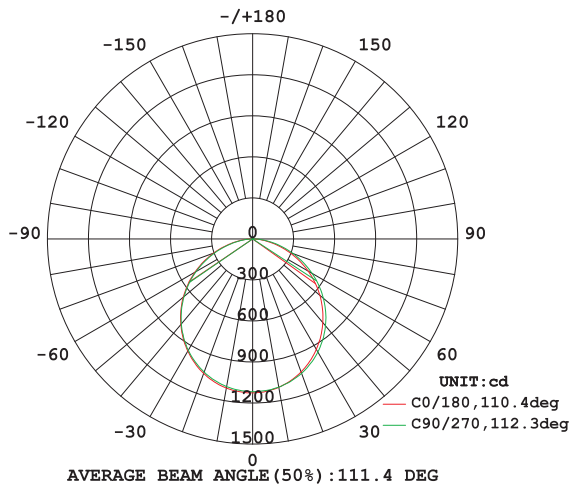


## Product Specification

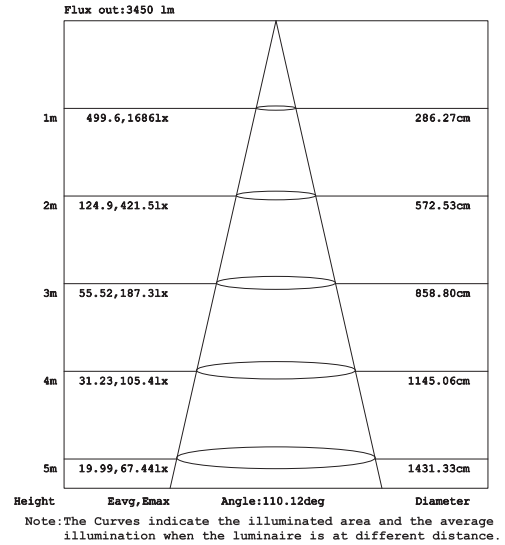
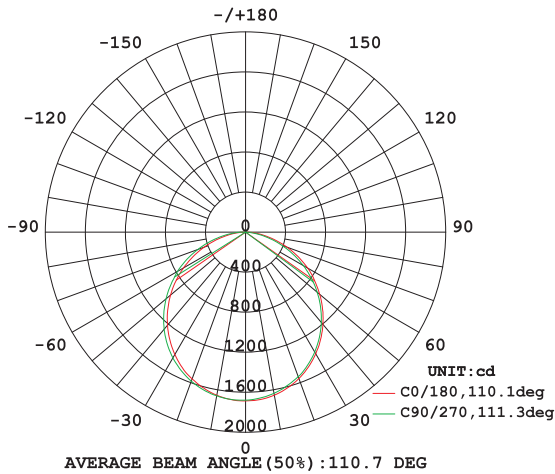
Size(Ft)	2X2			1X4	2X4			
Power Consumption(W)	25	40	50	40	40	50	60	72
Lumen Output(LM)	3125±5%	5000±5%	6250±5%	5000±5%	5000±5%	6250±5%	7500±5%	9000±5%
Light Efficacy (lm/W)	125±5%							
CCT(K)	3045±175K 3465±245K 3985±275K 4503±243K 5028±283K							
Color Rendering Index(CRI)	>80							
AC Input Rating(Vac)	AC 100-277V 50/60Hz							
Dimming(Non-dimming,0-10V)	Optional							
PF	≥0.90							

# Photometric Data&Diagram

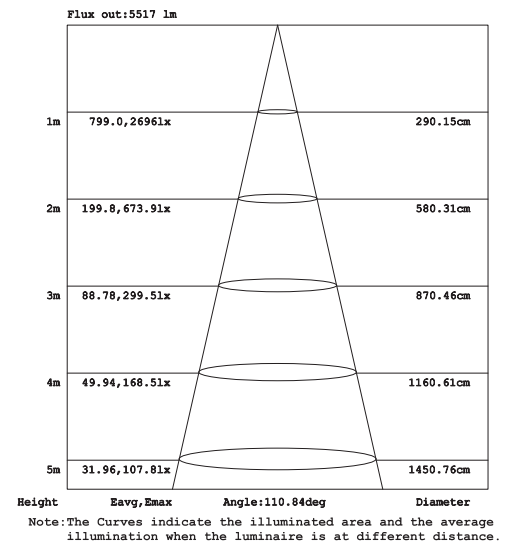
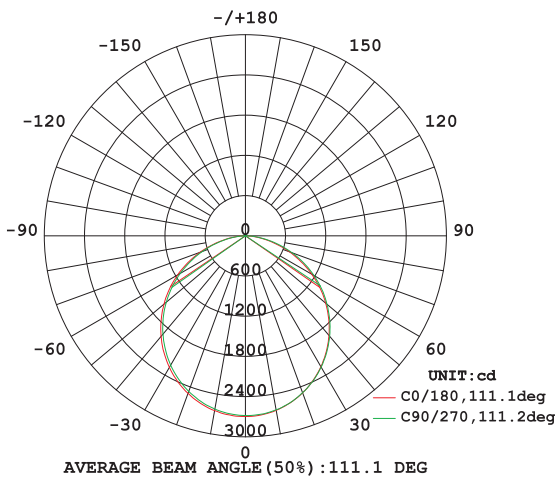
## 2X2 LUMINOUS INTENSITY DISTRIBUTION DIAGRAM



## 1X4 LUMINOUS INTENSITY DISTRIBUTION DIAGRAM

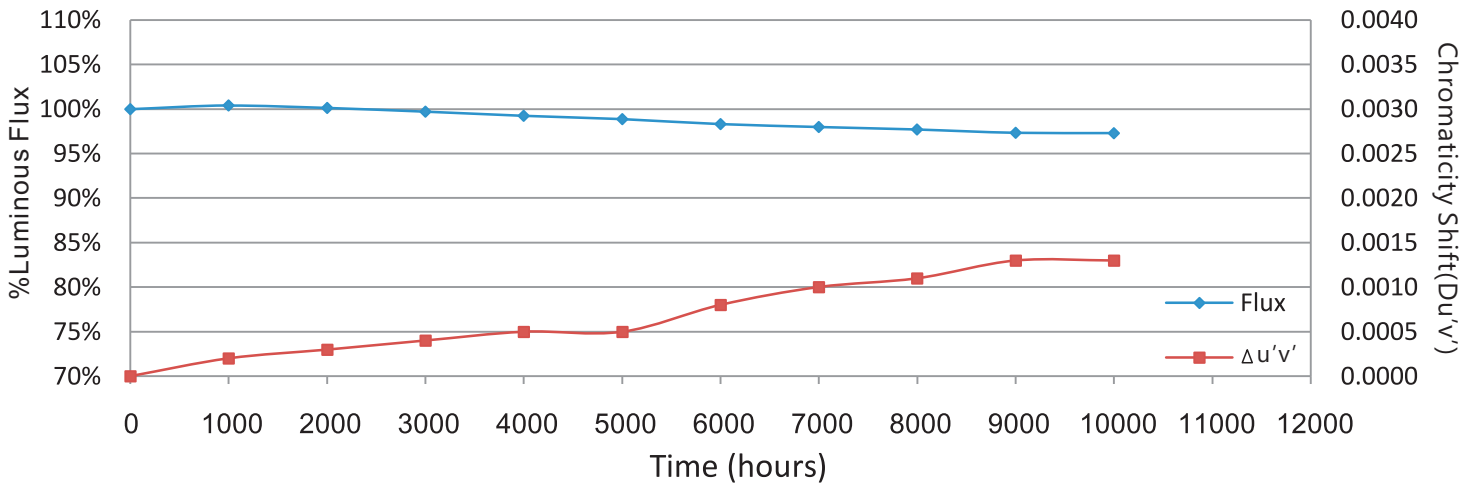


## 2X4 LUMINOUS INTENSITY DISTRIBUTION DIAGRAM



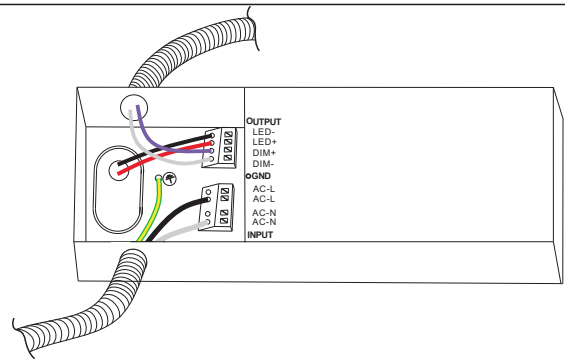
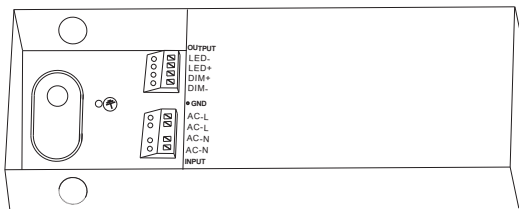
## Luminous Decay Graph

**Data Set 1, 55°C, 60mA (Chromaticity Shift)**

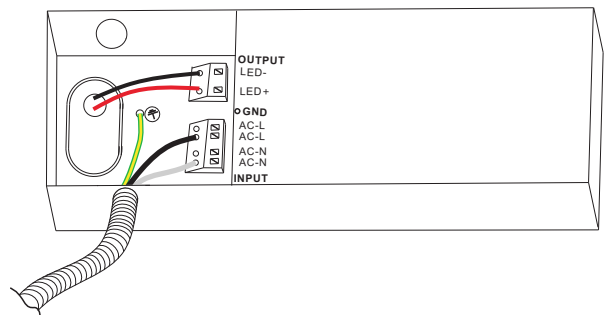
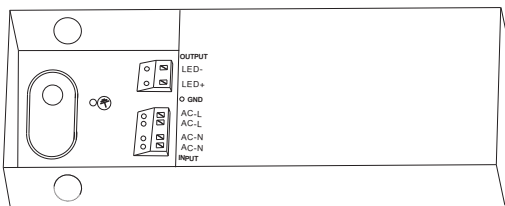


## Connection Mode

### Dimming Driver

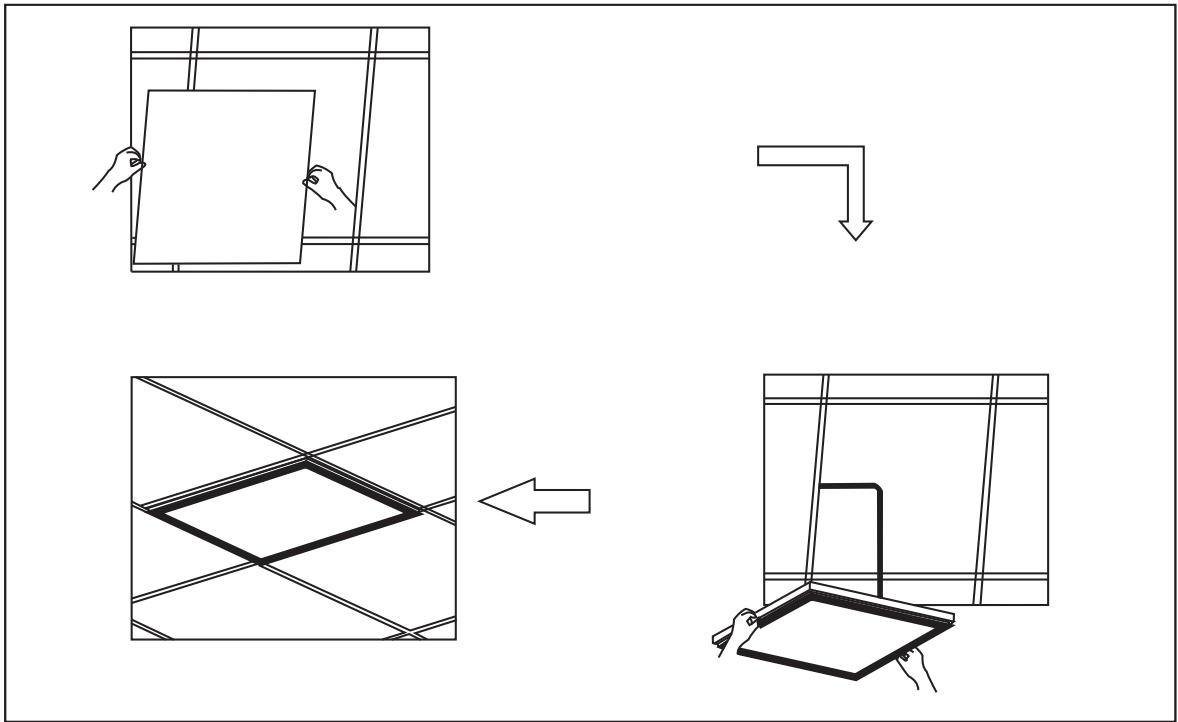


### Non-dimmable Driver



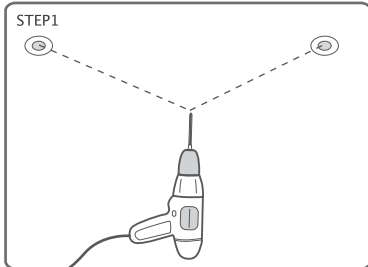
# Installation Guide

## Build-in

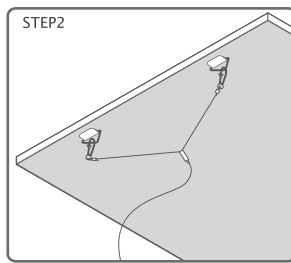


## Suspended

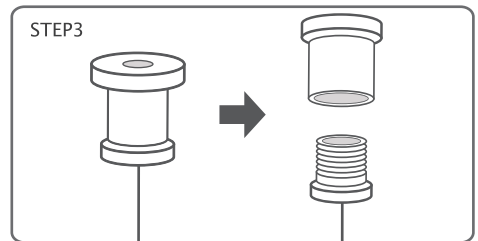
According to the width of the panel light, drill 2 mounting holes on the mounting position



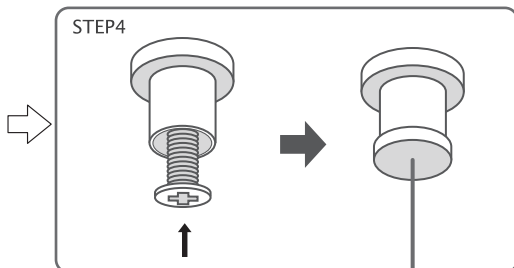
Button the panel light with the dog buckle of the equipped rope.



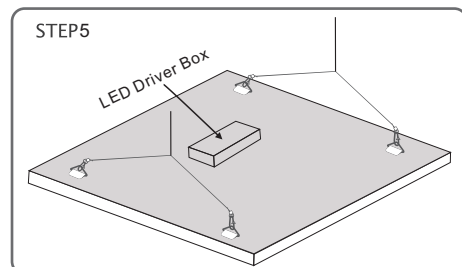
Twist off the rope grab device, and divide it into two parts: the upper cover and lower cover.



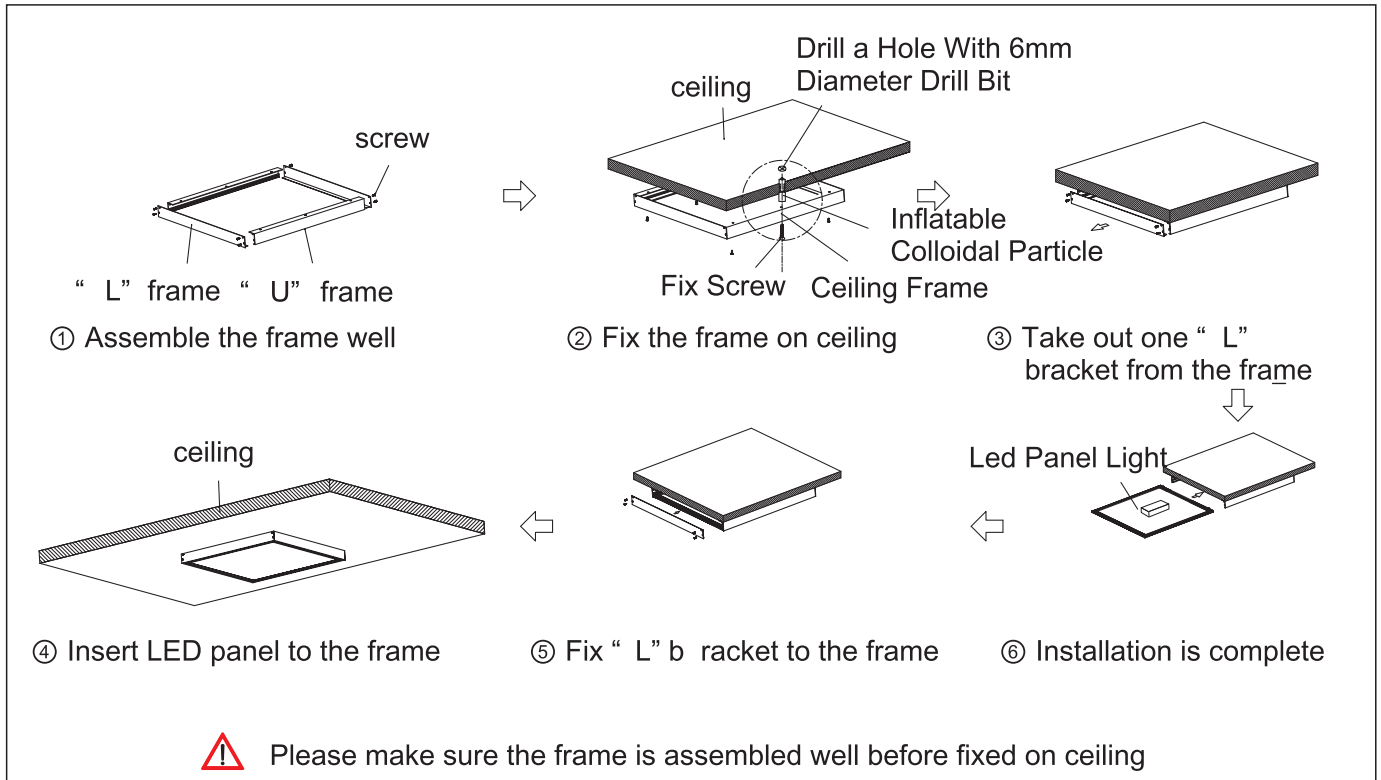
Fix the upper cover into prepared mounting holes with self-tapping screws (not included), and then twist on the lower cover.



Connect LED panel light by the hook of suspension wire

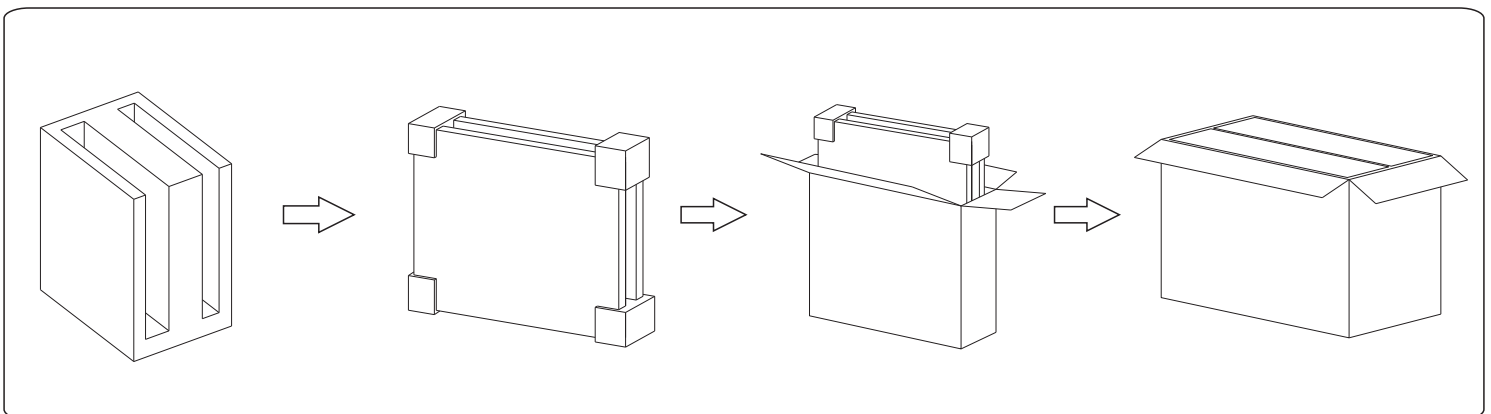


## Surface Mount



## Package

Item	N.W.	CARTON SIZE(cm)	Qty.	G.W.	20GP container can load (Qty)	40HQ container can load (Qty)
2X2 FT	3.8kg/pc	68x70x25	4pcs/CTN	19.0kg/CTN	996	2244
1X4 FT	3.7kg/pc	129x40x25	4pcs/CTN	18.5kg/CTN	852	2156
2X4 FT	7.3kg/pc	129x70x25	4pcs/CTN	35.2kg/CTN	512	1204



## Warning

- Please use the product within the specified range of voltage.
- Please follow the correct installation steps to install the product, and do not touch when it is working.
- Please turn power off when installing and removing the products to avoid risk of electric shock.
- Please install the panel in the correct sized fixture.
- Do not look directly at LED light source for a long time.

## Warranty

- 5 years warranty from the shipping date;
- We will replace all the failed products due to design/production quality during warranty period;
- We will bear all cost of maintains if the customer can help us to repair locally;
- We don't have the responsibility to compensate for any incorrect installation or artificial damage;
- We don't have the responsibility to compensate for damage occurred during the transit.

## Application Reference

Application for most indoor area for Commercial Lighting, residential lighting and Industrial lighting, etc.

Warning and caution:

1. Don't use in completely enclosed fixture and damp area.
2. Used as safety or emergency lamps are not recommended.



family



office

### JOYTECH PRODUCTS CO.,LTD

1F, No.15, Lane 27, Sec.3 Chung-king South Rd., Taipei 100, Taiwan, R.O.C

Tel : 886-2-23582899 Fax : 886-2-23415778

E-Mail : sales@joytech-jpc.com.tw Website : www.joytech-jpc.com.tw